



# Dendrochronological reconstruction of the epicentre and early spread of emerald ash borer in North America

Nathan W. Siegert<sup>1,\*†</sup>, Deborah G. McCullough<sup>1</sup>, Andrew M. Liebhold<sup>2</sup> and Frank W. Telewski<sup>3</sup>

<sup>1</sup>Departments of Entomology and Forestry, Michigan State University, East Lansing, MI 48824-1115, USA, <sup>2</sup>US Forest Service, Northern Research Station, Morgantown, WV 26505, USA, <sup>3</sup>Department of Plant Biology, Michigan State University, East Lansing, MI 48824-1312, USA

## ABSTRACT

**Aim** Emerald ash borer *Agrilus planipennis* was identified in 2002 as the cause of extensive ash (*Fraxinus* spp.) decline and mortality in Detroit, Michigan, and has since killed millions of ash trees in the US and Canada. When discovered, it was not clear how long it had been present or at what location the invading colony started. We used dendrochronological methods to document the onset and progression of ash mortality and the spatio-temporal dynamics of the invasion. Reconstructing the progression of ash mortality serves as a proxy to draw inferences about the colonization and spread of emerald ash borer in North America.

**Location** Southeastern Michigan, USA.

**Methods** We collected increment cores from dead, declining or non-symptomatic ash trees on a systematic 4.8 × 4.8 or 2.4 × 2.4 km grid in 2004–2006. Geo-referenced samples were cross-dated to determine the earliest date emerald ash borer-killed trees in each location. Interpolated dates of ash mortality were analysed to determine rates and patterns of emerald ash borer spread across the 1.5 million ha study area.

**Results** We identified a location in southeastern Michigan where ash trees were killed by emerald ash borer as early as 1997. Rates of ash mortality subsequently progressed at 3.84 km year<sup>-1</sup> from 1998 to 2001 and then increased to 12.97 km year<sup>-1</sup> from 2001 to 2003 as satellite colonies coalesced with the primary infestation. From 1998 to 2003, new satellites formed at a rate of 7.4 per year, with average jump distances of 24.5 km.

**Main conclusions** Emerald ash borer was likely established in southeastern Michigan by at least the early to mid-1990s. Anthropogenic-aided stratified dispersal and the coalescence of satellite colonies with the primary population resulted in biphasic range expansion, rapidly expanding the footprint of the invasion. Our reconstruction of the emerald ash borer invasion demonstrates this invaders' remarkable capacity for population growth and spread.

## Keywords

*Agrilus planipennis*, biological invasions, dendroentomology, epicentre, invasive forest pest, stratified dispersal.

\*Correspondence: N. W. Siegert, Departments of Entomology and Forestry, 243 Natural Sciences Bldg., Michigan State University, East Lansing, MI 48824-1115, USA.  
E-mail: nwsiegert@fs.fed.us

†Present Address: US Forest Service, Northeastern Area State and Private Forestry, Forest Health Protection, Durham, NH 03824, USA

## INTRODUCTION

Invasive forest pests affect a range of ecosystem processes and alter community dynamics (Asner & Beatty, 1996; Mack *et al.*, 2000; Hale *et al.*, 2008; Krushelnycky & Gillespie, 2008)

and cost regulatory agencies, plant-based industries and property owners billions of dollars annually (Aukema *et al.*, 2011). Biological invasions of non-indigenous species can be characterized by three distinct phases: arrival, establishment and spread (Mack *et al.*, 2002; Lockwood *et al.*, 2007; Liebhold &

Tobin, 2008). International trade regulations and inspections have undoubtedly reduced the arrival of non-indigenous species, but these efforts have largely been offset by increases in global commerce and travel, resulting in a steady accumulation of non-native plant pests (Niemi & Mattson, 1996; Work *et al.*, 2005; Liebhold *et al.*, 2006; McCullough *et al.*, 2006; Tatem & Hay, 2007; Aukema *et al.*, 2010).

Once a non-indigenous species becomes established, its spread is strongly influenced by the organism's capacity for dispersal. Species solely capable of short-distance dispersal, typically characterized by diffusive movement, tend to expand their range continuously along the periphery of the primary population (Shigesada & Kawasaki, 1997). Other organisms are capable of both short- and long-distance dispersal and spread via the formation of satellite colonies well beyond the main invasion front. These satellite colonies typically continue to grow in size through diffusion and, over time, coalesce with the expanding primary population. This process, termed 'stratified diffusion', may greatly increase the rate of radial expansion and has been documented in many species (Moody & Mack, 1988; Shigesada & Kawasaki, 1997).

Emerald ash borer, *Agrilus planipennis* Fairmaire (Coleoptera: Buprestidae), a phloem-feeding insect native to parts of Asia, was identified in 2002 as the cause of ash (*Fraxinus* spp.) decline and mortality in the greater metropolitan area of Detroit, Michigan, USA, and shortly thereafter, in Windsor, Ontario, Canada (Cappaert *et al.*, 2005; Poland & McCullough, 2006). Since then, emerald ash borer has killed tens of millions of ash trees in forest, riparian and urban areas, becoming the most destructive and costly forest insect to invade North America (Aukema *et al.*, 2011). As of February 2014, emerald ash borer populations had been identified in at least 21 additional states and the province of Quebec (Emerald Ash Borer Information, 2014). Emerald ash borer has also invaded the Moscow region of Russia and now threatens ash in Europe (Baranchikov *et al.*, 2008; Kenis & Branco, 2010; Eyre *et al.*, 2013; Orlova-Bienkowskaja, 2013).

In its native habitat, emerald ash borer functions as a secondary pest, colonizing and killing severely stressed or declining ash trees (Liu *et al.*, 2003). North American ash species, however, have no evolutionary history with emerald ash borer or with native congeners. While stressed trees are preferentially colonized (McCullough *et al.*, 2009a,b; Siegert *et al.*, 2010), emerald ash borer also attacks and kills healthy trees, and native ash species could eventually be functionally extirpated from North American forest systems (Poland & McCullough, 2006; Klooster *et al.*, 2014; Herms & McCullough, 2014). Cultivars of green ash (*Fraxinus pennsylvanica* Marsh.) and white ash (*Fraxinus americana* L.) have been popular landscape trees for decades and comprise more than 20% of the urban forest canopy in some areas (MacFarland & Meyer, 2005; Poland & McCullough, 2006). Projected costs of treating or replacing even 45% of the landscape ash trees in urban areas with emerald ash borer infestations were estimated at \$10.7 billion USD from 2009 to 2019 (Kovacs *et al.*, 2010). Aukema *et al.* (2011) further estimated costs of

emerald ash borer to municipalities and private property owners exceed \$1 billion USD annually.

While nearly all native ash species are threatened, there are consistent interspecific differences in emerald ash borer host preference or host resistance (Anulewicz *et al.*, 2008; Rebek *et al.*, 2008; Tanis & McCullough, 2012). Adult beetles select hosts for leaf-feeding, which occurs throughout their 3–6 week life span, and mature females lay eggs in bark cracks or crevices between bouts of feeding and resting (Cappaert *et al.*, 2005; Mercader *et al.*, 2012). Larvae feed on cambium and phloem in galleries that typically score the outer sapwood, thus disrupting nutrient and water transport. While some native wood-boring insects will colonize severely stressed, newly dead or recently cut ash trees (Drooz, 1985; Johnson & Lyon, 1994; Solomon, 1995), the s-shaped, serpentine galleries of emerald ash borer larvae are readily distinguishable. In newly infested, healthy trees, emerald ash borer often requires 2 years for development, but as densities build and trees become stressed, development is usually completed in 1 year (Cappaert *et al.*, 2005; Siegert *et al.*, 2010; Tluczek *et al.*, 2011). Intensive stem analyses of infested trees at localized outlier sites in Michigan and several other states have shown ash trees are typically infested for at least 3–5 years before tree mortality occurs (Siegert *et al.*, 2007; McCullough & Mercader, 2012; N.W.Siegert & D.G. McCullough, unpublished data). Green ash, which is widely distributed in forests and commonly used in landscapes, and black ash (*Fraxinus nigra* Marsh.), which typically grows in northern swamps or bogs, are highly preferred hosts of emerald ash borer and are particularly vulnerable (Anulewicz *et al.*, 2007, 2008; Rebek *et al.*, 2008).

Following the initial detection of emerald ash borer in 2002, regulatory officials began efforts to delimit the extent of the infestation. Detecting low-density populations of emerald ash borer, however, was and remains challenging (Cappaert *et al.*, 2005; Herms & McCullough, 2014). Newly infested trees typically exhibit none of the external symptoms that characterize heavily infested trees, such as holes left by woodpeckers preying on late instar larvae, epicormic sprouts, or progressive canopy thinning and dieback (Cappaert *et al.*, 2005; McCullough *et al.*, 2009b; Poland *et al.*, 2011). The small adult beetles (7.0–13 mm long) spend most of their life span in the canopy and are seldom observed, even in high-density populations. Moreover, emerald ash borer adults do not produce long-distance pheromones (Rodriguez-Saona *et al.*, 2006; Crook & Mastro, 2010), and artificial traps baited with host volatiles are not highly effective, particularly when emerald ash borer populations are at very low densities (McCullough *et al.*, 2011; Mercader *et al.*, 2012, 2013). By autumn 2003, regulatory agencies in the US had quarantined six counties in southeastern Michigan (Federal Register, 2003). The quarantine, which regulated transport of ash trees, logs, firewood and related material, was established well beyond the suspected primary infestation, based on visual surveys of dead, declining and symptomatic trees (Rauscher & Mastro, 2004). The number of dead and

declining trees in the greater Detroit area suggested that emerald ash borer had been present for some time, but the location of the epicentre of the infestation was unknown.

The distinct larval galleries, lack of host resistance and relatively rapid host mortality caused by emerald ash borer provided a unique opportunity to use dendrochronology to reconstruct the historical spatio-temporal dynamics of this biological invasion across the area in southeastern Michigan that encompassed the primary emerald ash borer population. We reconstructed establishment and spread of the founding population across this diverse, heterogeneous environment using cross-dating to identify the year of mortality of trees killed by emerald ash borer. Our data represent a robust, high-resolution record of the progression of emerald ash borer during the period when it was unknown and unmanaged. Our goals were to document: (1) the colonization and spread of the primary population; (2) the formation of satellite colonies beyond the main invasion front of the primary population; and (3) the coalescence of satellite colonies with the expanding primary population over time. Results provide a historical perspective of the invasion of this notable pest and document the importance of isolated satellite colonies forming ahead of the primary population front in the spread of this species.

## METHODS

### Study area

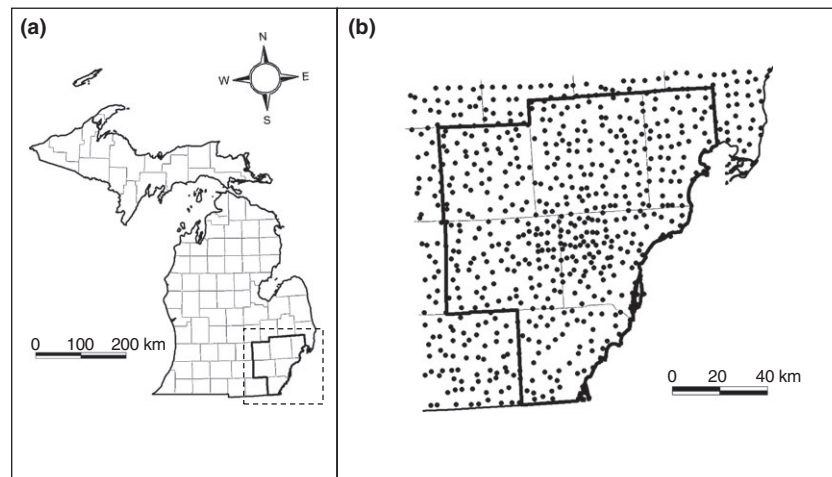
To reconstruct the origin and progression of emerald ash borer-induced ash mortality, we sampled ash trees across a geographical area, roughly 1.5 million ha in size ( $> 15,000 \text{ km}^2$ ) that encompassed the original six Michigan counties quarantined for emerald ash borer by regulatory officials in 2002–2003 (Fig. 1a). Our study area extended beyond the original quarantine (Fig. 1a), extending from  $41.73^\circ$  to  $42.96^\circ \text{ N}$  and from  $82.44^\circ$  to  $84.29^\circ \text{ W}$ , and ash trees at the periphery of our study area generally appeared to be healthy and exhibited no signs or symptoms of emerald ash borer

infestation. The study area included urban and residential areas, forested parks, small woodlots and agricultural fields.

We systematically sampled green ash trees at least every  $4.8 \times 4.8 \text{ km}$  throughout the study area ( $n = 1085$  trees sampled) (Fig. 1b). Green ash was selected for sampling because of its nearly ubiquitous distribution in this region and because it is highly preferred and vulnerable to emerald ash borer (Anulewicz *et al.*, 2007, 2008). We delineated an area, *c.*  $900 \text{ km}^2$  in size, in the centre of the sampling grid where a relatively high proportion of ash trees were dead. We suspected this area encompassed the core infestation of the primary emerald ash borer population and therefore intensified our sampling by selecting trees on at least a  $2.4 \times 2.4 \text{ km}$  grid.

### Sample collection and measurement

Extensive visual surveys were conducted with vehicles and on foot in natural and urban settings within each cell of our systematic sampling grid to identify green ash trees that appeared to have the most advanced emerald ash borer infestation. Traits of such trees included extensive emerald ash borer larval galleries, few remaining fine branches or twigs and bark that was sloughing and separating from the sapwood. Our next priority were trees that had been killed more recently by emerald ash borer; these trees also had extensive larval galleries but typically retained most or all fine branches and twigs, and there was little, if any, bark separation from wood. If we did not find ash killed by emerald ash borer, we then prioritized declining trees with obvious signs of emerald ash borer infestation including bark cracks over the distinctive larval galleries and exit holes of emerged adult beetles (Cappaert *et al.*, 2005; McCullough *et al.*, 2008). When we could find no dead or declining ash within a grid cell, we sampled non-symptomatic ash trees (Fig. 1b). Additional trees were occasionally sampled within a cell to aid in ageing and cross-dating at a given location. GPS coordinates (ETrex Legend, Garmin International, Olathe, KS, USA) were recorded for each sample tree.



**Figure 1** Extent of study area (outlined with dashed line) in southeastern Michigan (a) and locations of sample trees (solid black circles) used in reconstructing the temporal and spatial dynamics of emerald ash borer (*Agrilus planipennis*) (b). Initial 2002–2003 quarantine area is denoted by the bold outline.

Sampling consisted of collecting two increment cores from each of the selected tree(s) in each cell using 5.15-mm (core diameter) increment borers (Suunto, Helsinki, Finland) ( $n = 1976$  increment cores collected). Generally, increment cores were collected at breast height (1.5 m) from two different aspects of each sample tree, avoiding areas where ring patterns were likely to be distorted (e.g. areas with decay, near branches or comprised of tension wood). In a few cases, cross sections of the main stem rather than increment cores were collected at breast height from felled or downed trees.

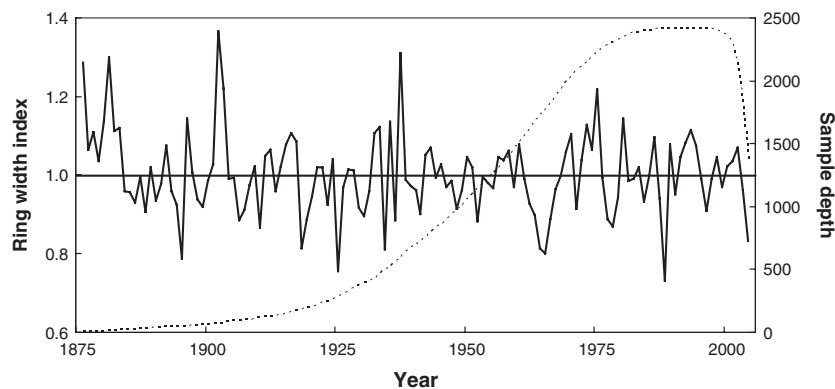
Samples (cores and cross sections) were dried, and cores were glued onto wooden mounts. Samples were surfaced with successively finer grit sandpaper ranging from ANSI 80 grit (177–210  $\mu\text{m}$ ) to ANSI 220 grit (53–74  $\mu\text{m}$ ) (Orvis & Grissino-Mayer, 2002) to expose the annual growth rings. Additional polishing of increment core surfaces with ANSI 320 grit (32.5–36.0  $\mu\text{m}$ ) to ANSI 400 grit (20.6–23.6  $\mu\text{m}$ ) sandpaper was conducted as needed to clearly distinguish growth rings. Ring widths from each increment core were then measured to the nearest 0.01 mm under  $10\times$  magnification using a Velmex measuring system (Velmex, Inc., Bloomfield, NY, USA) coupled with a linear encoder (Metronics, Inc., Bedford, NH, USA) and Measure J2X software (VoorTech Consulting, Holderness, NH, USA). Rings widths from each cross section were similarly measured along two radii and cross-dated. In cases where an increment core spanned the diameter of the tree and included two complete ring series (i.e. one ring series extending from the outer bark to the pith and another complete ring series extending from the pith to the outer bark on the opposite side of the tree), both ring series were measured and individually cross-dated ( $n = 2421$  complete ring series).

### Cross-dating samples

Skeleton plots, which graphically represent the width of each annual growth ring relative to the average width of the three

tree rings on either side, were generated from ring width measurements for each increment core. Ring porous trees, such as ash, have annual growth rings with a characteristic band of large water-conducting pores produced at the beginning of the growing season (i.e. earlywood/springwood) followed by a band of much smaller pores produced later in the growing season (i.e. latewood/summerwood) and rarely have false or missing rings (Phipps, 1985; Fritts, 2001). Increment cores were first cross-dated to other cores collected from the same tree and then to increment cores collected from other nearby sample trees within a grid cell or adjacent cells. Increment cores and skeleton plots from live, non-symptomatic ash trees were inspected first and dates assigned to each growth ring. Skeleton plots were used to visually cross-date the remaining increment cores, matching marker years (i.e. narrow rings caused by adverse growing conditions and wide rings produced during years with more favourable growing conditions) to determine the precise year of formation of each growth ring (Stokes & Smiley, 1968). Notable marker years that were especially persistent throughout the large study area included narrow rings produced in 1895, 1918, 1925, 1934, 1965, 1988 and 1996, and wide rings produced in 1902, 1937, 1975 and 1980 (Fig. 2).

Visual cross-dating results were verified using COFECHA software, a quality control program used to assess cross-dating and ring measurement accuracy (Holmes, 1983; Grissino-Mayer, 2001). COFECHA was used iteratively as needed at local scales (e.g. county-level or smaller) and then for the entire study area to verify cross-dating results overall. If COFECHA flagged increment cores that could potentially cross-date to a different year, indicating a possible error in the visual cross-dating or ring series measurement, increment cores and skeleton plots were re-examined for measurement errors and visually cross-dated again within individual trees and to other nearby sample trees to ensure the maximum degree of confidence in cross-dating accuracy. In cases where cross-dating results were more ambiguous, such as with



**Figure 2** The standard chronology (solid line) and sample depth (dotted line) of *Fraxinus pennsylvanica* increment cores ( $n = 2421$  total cores) sampled for the reconstruction of emerald ash borer (*Agrilus planipennis*) establishment and spread in southeastern Michigan, USA. Tree ring series used to develop the standard chronology averaged 53.6 year in length and cross-dated relatively well throughout the heterogeneous environment of the greater Detroit metropolitan area (series intercorrelation = 0.366; average mean sensitivity = 0.236).

complacent ring series where ring widths were not as variable year to year, field notes taken at the time of sample collection (i.e. qualitative measures of tree decline and emerald ash borer infestation such as percentage leaf cover, missing outer bark and presence of fine branches and twigs, bark splits, emerald ash borer exit holes or exposed larval galleries) were used to aid in determination of the year of mortality. For instance, if COFECHA software indicated that a given core may have cross-dated 4 years earlier than visual cross-dating indicated (e.g. 2001 as opposed to 2005), field notes such as '70% leaf cover in 2005' enabled us to confirm the terminal year of growth.

ARSTAN software (Cook & Holmes, 1999) was applied to individual cores to remove growth trends and standardize cross-dated tree ring series before generating a standard chronology of green ash radial growth for the study area (Fig. 2). To remove low frequency variability due to biological or stand-level effects, tree ring series were detrended using a cubic smoothing spline of 50% frequency response of 67% of the length of each series.

### Spatial interpolation and reconstructed population dynamics

Spatial interpolation of the earliest date that emerald ash borer was responsible for tree mortality from 645 geographically referenced sample trees was used to reconstruct the origin and progression of emerald ash borer-induced ash mortality in southeastern Michigan. Sample trees used for the spatial interpolation represent a subset of the 1085 total trees sampled and were selected based on the earliest date that emerald ash borer tree mortality occurred within each cell. The remaining 440 trees represent additional samples that were occasionally collected from other trees within a cell to aid in ageing and cross-dating at a given location. Points were imported to the ARCVIEW 3.2 geographical information system (Environmental Systems Research Institute, Redlands, CA, USA) and interpolated with the Spatial Analyst extension using inverse distance weighting of the 12 nearest neighbours to each sample point. An inverse distance exponent value of 2 was used in the interpolation procedure. Inverse distance-based weighted interpolation was used to estimate interpolated values on at least a  $4.8 \times 4.8$  km grid (Watson & Philip, 1985).

Based on the reconstructed spatial and temporal dynamics of emerald ash borer-caused ash mortality, the number of satellite colonies established each year was determined. Distance from the midpoint of each satellite colony to the nearest edge of the primary, continuously infested population was measured to the nearest 0.01 km using the Measure tool in ARCVIEW 3.2. Satellite colonies were defined as any emerald ash borer-induced tree mortality among our sample points that was disjunct from the primary population in a given year, as determined by the inverse distance-based weighted interpolation procedure described above. To characterize the radial expansion of the primary population each year,

distances to the edge of the primary population were also measured along 32 transects extending every  $11.25^\circ$  (i.e.  $11.25, 22.5, 33.75, 45, \dots, 360^\circ$ ) from the reconstructed epicentre of the emerald ash borer infestation. Linear regression was used to evaluate the rate of formation of satellite colonies and radial expansion of the primary population over time using SYSTAT version 10 (Systat Software, Inc., Chicago, IL, USA).

### RESULTS

Tree ring series, which averaged 53.6 year in length, were used to develop a standard chronology of ash growth from 1876 to 2004 ( $n = 2421$  total cores) (Fig. 2) across the study area of southeastern Michigan (Fig. 1a,b). More than 75% of the chronology's ring widths (i.e. 1907–2004) had sample depths of  $\geq 100$  cores, while the remainder ranged from 8 to 94 cores (Fig. 2). Sampled trees cross-dated relatively well throughout the widely diverse, heterogeneous environment of the greater Detroit metropolitan area. Series intercorrelation, which is the average correlation of each tree ring series with a chronology derived from all other tree ring series and measures the strength of the signal common to all sampled trees at a site, was 0.366 across the mosaic of urban and residential areas, forested parks, small woodlots and agricultural fields included in our study area. Mean sensitivity, which is the relative change in ring width from 1 year to the next and provides a measure of the relative ease of cross-dating, averaged 0.236 for all samples collected across the entire study area. Chronologies of ash growth developed from nearby trees generally had slightly improved statistics, as would be expected. County-level tree ring chronologies, for example, had series intercorrelations that averaged ( $\pm$  SE)  $0.394 \pm 0.012$  (range: 0.285–0.457) and average mean sensitivities of  $0.239 \pm 0.003$  (range: 0.222–0.259).

Reconstruction of the epicentre and progression of ash mortality caused by emerald ash borer across the study area was achieved after cross-dating each sample tree to determine its terminal year of growth. The earliest year that emerald ash borer was found to be responsible for killing ash trees in southeastern Michigan was 1997 in the suburban community of Canton in Canton Township in northwestern Wayne County (Fig. 3). Tree mortality progressively radiated from the epicentre of the emerald ash borer invasion in subsequent years with isolated pockets of tree mortality occurring beyond the apparent epicentre of the infestation (Fig. 3). From 1998 to 2003, isolated groups of emerald ash borer-killed trees formed at a rate of 7.4 per year ( $r^2 = 0.956$ ;  $P = 0.004$ ) (Fig. 4a) with average jump distances of 24.5 km (lower 95% CI = 20.3 km; upper 95% CI = 28.8 km) (Fig. 4b). In 1998, new isolated groups of emerald ash borer-killed trees became established at an average distance of 8.2 km (Fig. 5a), with a maximum distance of 12.9 km (Fig. 5b), from the edge of the reconstructed epicentre of the infestation. In contrast, from 1999 to 2002, distances of isolated groups of emerald ash borer-killed trees



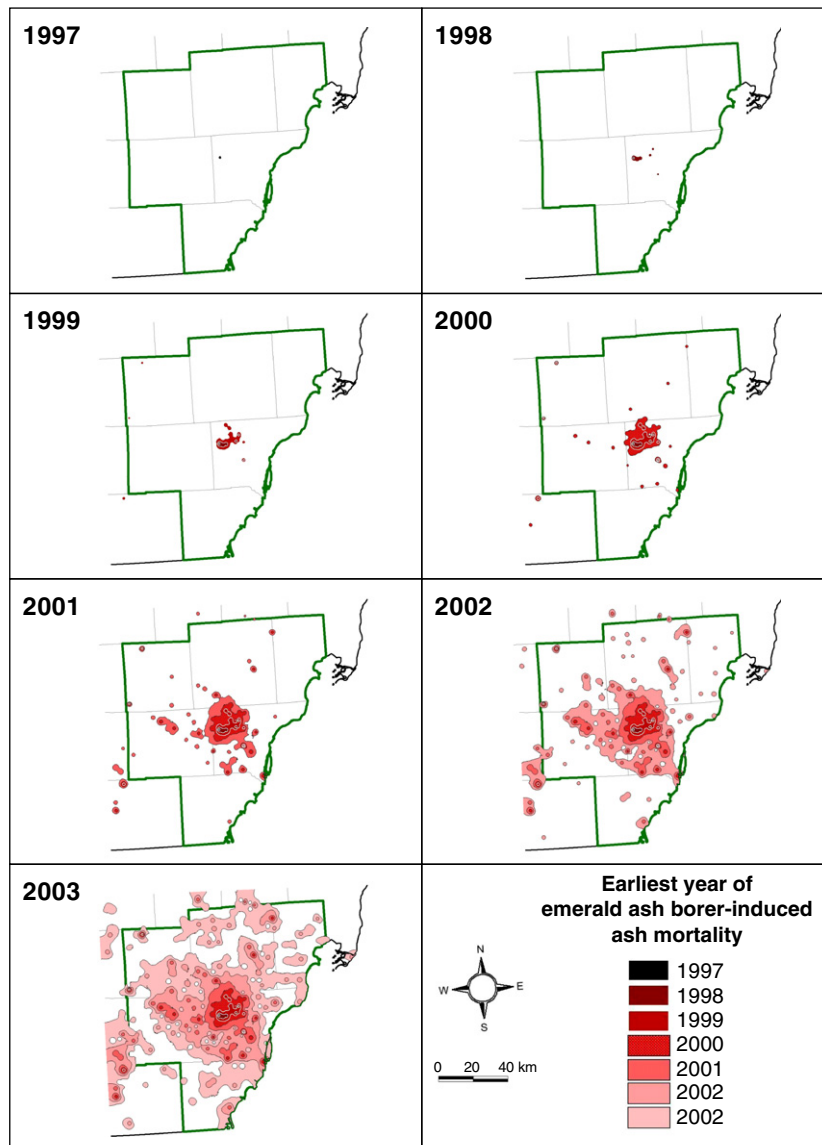


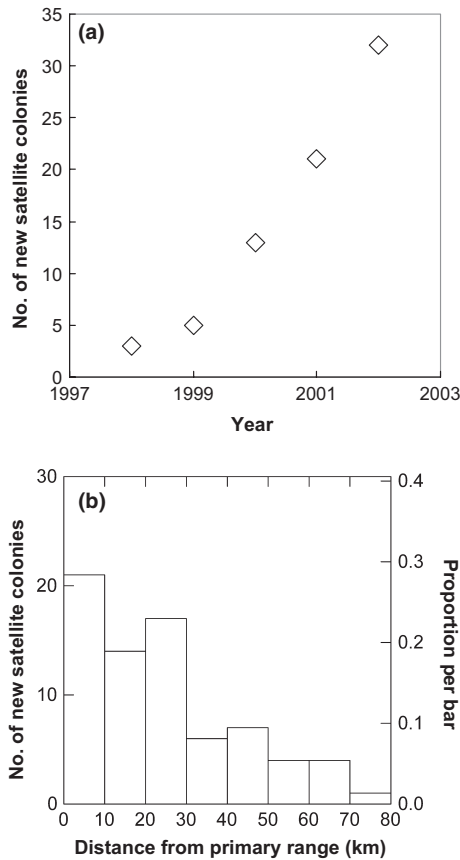
Figure 3 Interpolated reconstruction of the earliest emerald ash borer (*Agrilus planipennis*)-induced ash mortality across study area, 1997–2003. Initial 2002–2003 quarantine area is denoted by the green outline.

averaged ( $\pm$  SE)  $27.4 \pm 3.2$  km from the edge of the reconstructed epicentre of emerald ash borer infestation (Fig. 5a), with maximum distances of  $64.7 \pm 1.9$  km (Fig. 5b). Range expansion of the continuously infested emerald ash borer region initially occurred at  $3.84 \text{ km year}^{-1}$  from 1998 to 2001 (Fig. 6: dashed trend line;  $r^2 = 0.980$ ;  $P = 0.01$ ), then increased to  $12.97 \text{ km year}^{-1}$  from 2001 to 2003 (Fig. 6: solid trend line;  $r^2 = 0.999$ ;  $P = 0.025$ ) as an increasing number of formerly isolated groups of emerald ash borer-killed trees coalesced with the expanding primary emerald ash borer infestation (Fig. 3).

## DISCUSSION

The initial colonization arrival phase of a typical biological invasion is rarely observed, largely because relatively few individual organisms are involved, and it is thus not easily detectable. For this same reason, establishment and early spread is also typically not observed. Invasion of North

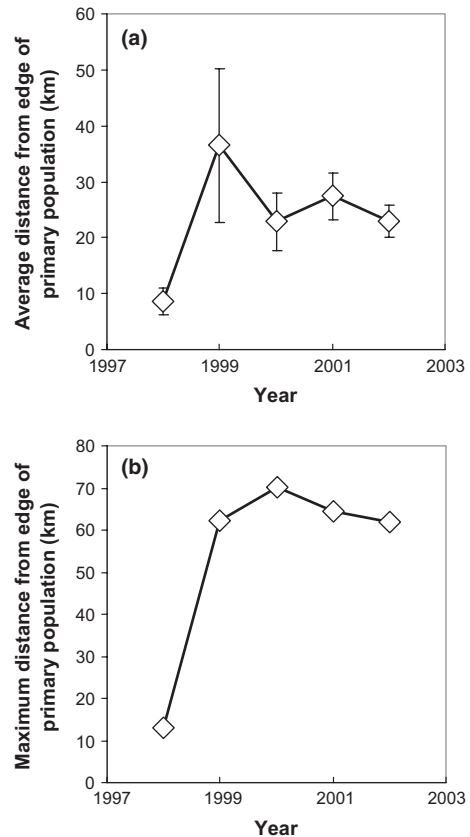
America by emerald ash borer, however, provided a unique opportunity to use dendrochronology to accurately reconstruct the historical establishment and spread dynamics of this destructive pest. Our approach was facilitated by specific features of this invasion, including the readily distinguishable galleries of emerald ash borer larvae, and the relatively rapid rates of emerald ash borer population growth and ash mortality following establishment (Mercader *et al.*, 2011a,b). Whole-tree dissections of emerald ash borer-killed trees and dendrochronological dating of the establishment of isolated satellite colonies in Michigan and several other states have consistently indicated that the earliest tree mortality at newly infested sites lags arrival of emerald ash borer by 3–5 years (Siegert *et al.*, 2007; McCullough & Mercader, 2012; N.W.Siegert & D.G. McCullough, unpublished data). The onset of ash mortality varies, depending on the size of the founding emerald ash borer population and the species, density and health of the hosts. Expansion at the periphery of the primary population and formation of satellite colonies



**Figure 4** Number of new satellite colonies by year (a) and jump distances from the primary emerald ash borer (*Agrilus planipennis*) population (b). From 1998 to 2002, new emerald ash borer satellite colonies formed at a rate of 7.4 per year ( $r^2 = 0.956$ ;  $P = 0.004$ ) with average jump distances of 24.5 km (lower 95% CI = 20.3 km; upper 95% CI = 28.8 km).

would typically occur at low densities, similar to emerald ash borer densities we have observed at outlier sites. Thus, the progression of ash mortality serves as a suitable surrogate for the spread of emerald ash borer, albeit lagged by a few years.

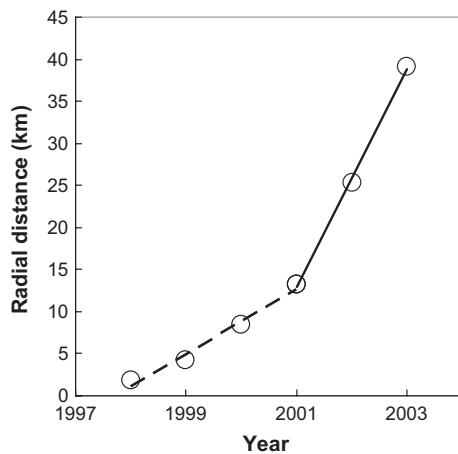
Our results showed that ash trees were killed by emerald ash borer in 1997 (5 years prior to its detection in 2002) in the suburban community of Canton in Wayne County in southeastern Michigan, c. 40 km west of Detroit. This highly urbanized area is adjacent to major highways, includes a sizeable industrial area with large warehouses and is located 25–60 km from international air and marine ports. Although we do not know exactly how emerald ash borer arrived in southeastern Michigan, solid wood packing material associated with containerized shipping is known to be a high-risk pathway for introductions of non-native subcortical insects (United States Department of Agriculture Animal & Plant Health Inspection Service (USDA APHIS), 2003; Work *et al.*, 2005; Haack, 2006). Intensive examination and whole-tree dissections of multiple ash trees at the reconstructed epicentre of the invasion in southeastern Michigan were not feasible given our resources and time constraints. While the



**Figure 5** Average ( $\pm$  SE) (a) and maximum distance (km) (b) of new satellite colonies from the nearest edge of the primary emerald ash borer (*Agrilus planipennis*) population each year. In 1998, new satellite colonies became established an average distance of 8.2 km, with a maximum distance of 12.9 km, from the edge of the primary population. In contrast, from 1999 to 2002, distances of new satellite colonies averaged ( $\pm$  SE)  $27.4 \pm 3.2$  km from the edge of the primary emerald ash borer population, with maximum distances of  $64.7 \pm 1.9$  km.

early progression of ash mortality generally radiated out from the Canton area in subsequent years forming the core of the reconstructed primary population, it is likely that our sampling did not detect the original tree colonized and killed by emerald ash borer. Moreover, given the 2-year life cycle that predominates in low-density populations and the temporal lag between emerald ash borer arrival and the onset of ash mortality, emerald ash borer was undoubtedly established well before 1997. We conclude, therefore, that emerald ash borer was introduced and became established in Canton, Michigan, no later than the early to mid-1990s, and possibly as early as the late 1980s.

A temporal lag between the establishment of a non-indigenous species and its detection is a common feature of biotic invasions (Crooks & Soule, 1999; Sakai *et al.*, 2001; Mack *et al.*, 2002; Memmott *et al.*, 2005; Liebhold & Tobin, 2006) and, in some cases, simply reflects exponential increases in population density over time (Skellam, 1951). In other situations, population growth rates may increase as an invader



**Figure 6** Biphasic range expansion of the primary population of emerald ash borer (*Agrilus planipennis*) as determined by the reconstructed establishment and spread in southeastern Michigan. Following establishment, range expansion initially occurred at  $3.84 \text{ km year}^{-1}$  from 1998 to 2001 (dashed trend line;  $r^2 = 0.980$ ;  $P = 0.01$ ) and then increased to  $12.97 \text{ km year}^{-1}$  from 2001 to 2003 (solid trend line;  $r^2 = 0.999$ ;  $P = 0.025$ ) as an increasing number of satellite colonies coalesced with the primary population.

overcomes Allee effects (Lewis & Kareiva, 1993; Taylor & Hastings, 2005) or result from changes in host or habitat quality (Griffen & Drake, 2008). In this specific case, detection was also delayed by the paucity of information on emerald ash borer, which was not recognized as a potentially serious pest prior to its detection in North America (Jendek, 1994; Cappaert *et al.*, 2005; Poland & McCullough, 2006).

The biphasic range expansion of emerald ash borer and the progression of ash mortality across southeastern Michigan are typical of biological invasions in which new satellite colonies are generated close enough to the primary population that coalescence occurs relatively quickly (Shigesada & Kawasaki, 1997). Tree mortality progressively radiated from the epicentre of the primary population at  $3.84 \text{ km year}^{-1}$  from 1998 to 2001, but from 2001 to 2003, this rate increased dramatically to  $12.97 \text{ km year}^{-1}$ . The accelerated spread rate in 2001–2003 reflects satellite colonies that became established well beyond the primary population and then coalesced with each other and the primary population during that timeframe.

The expansion of ash mortality likely resulted from a combination of natural emerald ash borer dispersal and inadvertent human-assisted transport of infested ash material across southeastern Michigan. Large-scale dispersal studies conducted in emerald ash borer infestations with a known origin have shown a high proportion (> 80%) of eggs are laid on trees within 100 m of the point where the parent beetles emerged (Mercader *et al.*, 2009, 2012; Siebert *et al.*, 2010). Adult emerald ash borer beetles, particularly mature females, are relatively strong fliers (Taylor *et al.*, 2010), however, and even in newly established infestations, a small proportion of

female beetles bypass apparently suitable hosts to oviposit on trees  $\geq 750 \text{ m}$  from their emergence point (Siebert *et al.*, 2010; McCullough *et al.*, 2011; Mercader *et al.*, 2012).

Anthropogenic transport of infested ash nursery trees, logs and firewood played a key role in both the growth of the primary population of emerald ash borer and the establishment of satellite colonies across southeastern Michigan and beyond. Trace-back and trace-forward investigations launched by regulatory officials soon after the discovery of emerald ash borer identified numerous infestations directly attributable to infested but non-symptomatic ash nursery trees planted in commercial, residential or right-of-way settings (Rauscher, 2005; McCullough & Siebert, 2007). Other infestations were associated with infested firewood transported to campgrounds and sawmills where ash logs were processed (McCullough & Siebert, 2007; Storer *et al.*, 2007; United States Department of Agriculture Animal & Plant Health Inspection Service (USDA APHIS), 2010; Haack *et al.*, 2010). Previous efforts to estimate or model emerald ash borer spread similarly noted the important contribution of human-assisted transport of infested ash material underlying stratified diffusion (BenDor *et al.*, 2006; Muirhead *et al.*, 2006; Prasad *et al.*, 2010).

It is important to note that spread of emerald ash borer and the expansion of ash mortality documented by our study occurred well before emerald ash borer was detected and identified in North America. Since late 2002, state and federal quarantines have regulated transport of ash trees, logs, firewood and related material from areas known to be infested. These efforts, coupled with a growing public awareness of emerald ash borer and ongoing outreach activities to convey the risk of moving infested material, should presumably diminish the likelihood of new satellite colonies becoming established. Nevertheless, previously unknown emerald ash borer infestations continue to be detected every year (Emerald Ash Borer Information, 2014).

Dendrochronology has long been used to track the temporal occurrence and impacts of fire, drought, insect outbreaks and other forest disturbances (e.g. Swetnam & Lynch, 1993; Swetnam *et al.*, 1999; Ryerson *et al.*, 2003; Rentch *et al.*, 2009), but has rarely been applied to evaluate spread of an invasive organism and certainly not on the spatial scale of our study. In two previous studies, dendrochronology was used to assess the establishment and spread of non-native woody plants, Norway maple (*Acer platanoides*) across a  $7.3 \text{ km}^2$  area on Mackinac Island, Michigan (Wangen & Webster, 2006), and hawthorn (*Crataegus monogyna*) into a  $5 \text{ km}^2$  grassland in New Zealand (Williams *et al.*, 2010). In another instance, spread of a root rot pathogen affecting Port Orford cedar (*Chamaecyparis lawsoniana*) across a  $37 \text{ km}^2$  area in Oregon and northern California was examined using dendrochronology (Jules *et al.*, 2002).

To maximize our chances of identifying the origin of the emerald ash borer infestation in southeastern Michigan, we preferentially sampled dead and declining trees, rather than prioritizing sites where trees would be relatively sensitive to



climatic fluctuations (e.g. xeric sites). Many trees we sampled, therefore, would inevitably have annual growth rings that were more similar in width (i.e. complacent) than if trees had been selected from sites where yearly fluctuations in limiting factors such as water availability would have produced larger or smaller rings (i.e. sensitive). This would contribute to lowering the series intercorrelation and average mean sensitivity of the chronology. Additionally, this chronology was developed for the entire 1.5 million ha (15,000 km<sup>2</sup>) study area which would presumably incorporate more variability into the chronology statistics. In general, mean sensitivity values in the 0.20–0.29 range are considered intermediate, and series intercorrelation values > 0.5 are desirable (Grissino-Mayer, 2001). These descriptive statistics, however, vary by species, regional climate, and, as in this case, the geographical extent of the study area (Fritts, 2001; Grissino-Mayer, 2001). Despite our sampling criteria and the broad expanse of the area encompassed by our sampling, the increment cores and cross sections cross-dated relatively well (series intercorrelation = 0.366; average mean sensitivity = 0.236) throughout the diverse, heterogeneous environment of southeastern Michigan.

Our results have important implications for managing emerald ash borer specifically, but more generally demonstrate the importance of early detection, and the role satellite colonies can play in accelerating the spread of invasive pests. Kovacs *et al.* (2011) showed that if the localized satellite colonies of emerald ash borer detected in 2005–2010 could have been prevented or contained, it would have saved or delayed economic costs associated with treating or replacing landscape ash trees by more than \$7 billion USD over the next decade.

Detectability was shown to be a critical factor influencing the success of arthropod eradication programmes around the globe (Tobin *et al.*, 2014), and Mehta *et al.* (2007) demonstrated the economic benefits associated with allocation of resources towards early detection versus costs of control or management of an invasive pest. Early detection, however, is particularly challenging for non-native cryptic or subcortical insects that do not produce long-range pheromones. While emerald ash borer has rapidly become the most economically damaging forest pest in North America (Aukema *et al.*, 2011; Kovacs *et al.*, 2011), the increasing rate of new detections of non-native phloem- and wood-boring species in the USA (Aukema *et al.*, 2010), many of which have no known pheromones, suggest similar patterns of biological invasion may occur in the future.

## ACKNOWLEDGEMENTS

We thank Rachel Disipio, Michael Tacey and Andrew Tluczek, all of Michigan State University, for their assistance in the field throughout southeastern Michigan. We further acknowledge Christopher Baisan, Ellis Margolis and Thomas Swetnam, at the Laboratory of Tree Ring Research at the University of Arizona, for their advice and expertise regarding cross-dating procedures and interpretation. Funding for

this research was provided by a grant to DGM from the US Forest Service, Northeastern Area State and Private Forestry, Forest Health Protection.

## REFERENCES

- Anulewicz, A.C., McCullough, D.G. & Cappaert, D.L. (2007) Emerald ash borer (*Agrilus planipennis*) density and canopy dieback in three North American ash species. *Arboriculture and Urban Forestry*, **33**, 338–349.
- Anulewicz, A.C., McCullough, D.G., Cappaert, D.L. & Poland, T.M. (2008) Host range of the emerald ash borer (*Agrilus planipennis* Fairmaire) (Coleoptera: Buprestidae) in North America: results of multiple-choice field experiments. *Environmental Entomology*, **37**, 230–241.
- Asner, G.P. & Beatty, S.W. (1996) Effects of an African grass invasion on Hawaiian shrubland nitrogen biogeochemistry. *Plant and Soil*, **186**, 205–211.
- Aukema, J.E., McCullough, D.G., Von Holle, B., Liebhold, A.M., Britton, K.O. & Frankel, S.J. (2010) Historical accumulation of nonindigenous forest pests in the continental United States. *BioScience*, **60**, 888–897.
- Aukema, J.E., Leung, B., Kovacs, K., Chivers, C., Britton, K.O., Englin, J., Frankel, S.J., Haight, R.G., Holmes, T.P., Liebhold, A.M., McCullough, D.G. & Von Holle, B. (2011) Economic impacts of non-native forest insects in the continental United States. *PLoS ONE*, **6**, e24587.
- Baranchikov, Y., Mozolevskaya, E., Yurchenko, G. & Kenis, M. (2008) Occurrence of the emerald ash borer, *Agrilus planipennis*, in Russia and its potential impact on European forestry. *EPPO Bulletin*, **38**, 233–238.
- BenDor, T.K., Metcalf, S.S., Fontenot, L.E., Sangunett, B. & Hannon, B. (2006) Modeling the spread of the emerald ash borer. *Ecological Modelling*, **197**, 221–236.
- Cappaert, D.L., McCullough, D.G., Poland, T.M. & Siegert, N.W. (2005) Emerald ash borer in North America: a research and regulatory challenge. *American Entomologist*, **51**, 152–165.
- Cook, E.R. & Holmes, R.L. (1999) *User's manual for program ARSTAN*. Laboratory of Tree-Ring Research, University of Arizona, Tucson.
- Crook, D.J. & Mastro, V.C. (2010) Chemical ecology of the emerald ash borer *Agrilus planipennis*. *Journal of Chemical Ecology*, **36**, 101–112.
- Crooks, J.E. & Soule, M.E. (1999) Lag times in population explosions of invasive species: causes and implications. *Invasive species and biodiversity management* (ed. by O.T. Sandlund, P.J. Schei and A. Viken), pp. 103–125. Kluwer Academic Publishers, Dordrecht.
- Drooz, A.T. (1985) *Insects of eastern forests*. United States Department of Agriculture Forest Service, Miscellaneous Publication 1426, Washington, D.C.
- Emerald Ash Borer Information (2014) Emerald Ash Borer. Available at: <http://www.emeraldashborer.info/> (accessed 21 February 2014).

- Eyre, D., Anderson, H., Baker, R. & Cannon, R. (2013) Insect pests of trees arriving and spreading in Europe. *Outlooks on Pest Management*, **24**, 176–180.
- Federal Register (2003) Emerald ash borer, quarantine and regulations. 7 CFR Part 301, **68**(198): 59082–59091.
- Fritts, H.C. (2001) *Tree rings and climate*. Laboratory of Tree-Ring Research, University of Arizona, Tucson.
- Griffen, B.D. & Drake, J.M. (2008) Effects of habitat quality and size on extinction in experimental populations. *Proceedings of the Royal Society B*, **275**, 2251–2256.
- Grissino-Mayer, H.D. (2001) Evaluating crossdating accuracy: a manual and tutorial for the computer program COFECHA. *Tree-Ring Research*, **57**, 205–221.
- Haack, R.A. (2006) Exotic bark- and wood-boring Coleoptera in the United States: recent establishments and interceptions. *Canadian Journal of Forest Research*, **36**, 269–288.
- Haack, R.A., Petrice, T.R. & Wiedenhoft, A.C. (2010) Incidence of bark- and wood-boring insects in firewood: a survey at Michigan's Mackinac Bridge. *Journal of Economic Entomology*, **103**, 1682–1692.
- Hale, C.M., Frelich, L.E., Reich, P.B. & Pastor, J. (2008) Exotic earthworm effects on hardwood forest floor, nutrient availability and native plants: a mesocosm study. *Oecologia*, **155**, 509–518.
- Hermes, D.A. & McCullough, D.G. (2014) The emerald ash borer invasion of North America: history, biology, ecology, impacts and management. *Annual Review of Entomology*, **59**, 13–30.
- Holmes, R.L. (1983) Computer assisted quality control in tree-ring dating and measurement. *Tree-Ring Bulletin*, **43**, 69–78.
- Jendek, E. (1994) Studies in the East Palaearctic species of the genus *Agrilus* Dahl, 1823 (Coleoptera: Buprestidae). Part I. *Entomological Problems*, **25**, 9–24.
- Johnson, W.T. & Lyon, H.H. (1994) *Insects that feed on trees and shrubs*, 2nd edn. Cornell University Press, Ithaca.
- Jules, E.S., Kauffman, M.J., Ritts, W.D. & Carroll, A.L. (2002) Spread of an invasive pathogen over a variable landscape: a nonnative root rot on Port Orford cedar. *Ecology*, **83**, 3167–3181.
- Kenis, M. & Branco, M. (2010) Impact of alien terrestrial arthropods in Europe. *BioRisk: Biodiversity & Ecosystem Risk Assessment*, **4**, 51–71.
- Klooster, W.S., Hermes, D.A., Knight, K.S., Hermes, C.P., McCullough, D.G., Smith, A., Gandhi, K.J.K. & Cardina, J. (2014) Ash (*Fraxinus* spp.) mortality, regeneration, and seed bank dynamics in mixed hardwood forests following invasion by emerald ash borer (*Agrilus planipennis*). *Biological Invasions*, **16**, 859–873.
- Kovacs, K., Haight, R.G., McCullough, D.G., Mercader, R.J., Siegert, N.W. & Liebhold, A.M. (2010) Cost of potential emerald ash borer damage in U.S. communities, 2009–2019. *Ecological Economics*, **69**, 569–578.
- Kovacs, K., Mercader, R.J., Haight, R.G., Siegert, N.W., McCullough, D.G. & Liebhold, A.M. (2011) The influence of satellite populations of emerald ash borer on projected economic costs in U.S. communities, 2010–2020. *Journal of Environmental Management*, **92**, 2170–2181.
- Krushelnycky, P.D. & Gillespie, R.G. (2008) Compositional and functional stability of arthropod communities in the face of ant invasions. *Ecological Applications*, **18**, 1547–1562.
- Lewis, M.A. & Kareiva, P. (1993) Allee dynamics and the spread of invading organisms. *Theoretical Population Biology*, **43**, 141–158.
- Liebhold, A.M. & Tobin, P.C. (2006) Growth of newly established alien populations: comparisons of North American gypsy moth colonies with invasion theory. *Population Ecology*, **48**, 253–262.
- Liebhold, A.M. & Tobin, P.C. (2008) Population ecology of insect invasions and their management. *Annual Review of Entomology*, **53**, 387–408.
- Liebhold, A.M., Work, T.T., McCullough, D.G. & Cavey, J.F. (2006) Airline baggage as a pathway for alien insect species entering the United States. *American Entomologist*, **52**, 48–54.
- Liu, H., Bauer, L.S., Gao, R., Zhao, T., Petrice, T.R. & Haack, R.A. (2003) Exploratory survey for the emerald ash borer, *Agrilus planipennis* (Coleoptera: Buprestidae), and its natural enemies in China. *The Great Lakes Entomologist*, **36**, 191–204.
- Lockwood, J.L., Hoopes, M.F. & Marchetti, M.P. (2007) *Invasion ecology*. Blackwell Publishing, Oxford.
- MacFarland, D.W. & Meyer, S.P. (2005) Characteristics and distribution of potential ash trees for emerald ash borer. *Forest Ecology and Management*, **213**, 15–24.
- Mack, R.N., Simberloff, D., Lonsdale, W.M., Evans, H., Clout, M. & Bazzaz, F.A. (2000) Biotic invasions: causes, epidemiology, global consequences and control. *Ecological Applications*, **10**, 689–710.
- Mack, R., Barrett, S.C.H., de Fur, P.L., MacDonald, W.L., Madden, L.V., Marshall, D.S., McCullough, D.G., McEvoy, P.B., Nyrop, J.P., Reichard, S.E.H., Rice, K.J. & Tolin, S.A. (2002) *Predicting invasions of nonindigenous plants and plant pests*. National Academy Press, Washington, D.C.
- McCullough, D.G. & Mercader, R.J. (2012) SLAM in an urban forest: evaluation of potential strategies to SLOW Ash Mortality caused by emerald ash borer (*Agrilus planipennis*). *International Journal of Pest Management*, **58**, 9–23.
- McCullough, D.G. & Siegert, N.W. (2007) Estimating potential emerald ash borer (*Agrilus planipennis* Fairmaire) populations using ash inventory data. *Journal of Economic Entomology*, **100**, 1577–1586.
- McCullough, D.G., Work, T.T., Cavey, J.F., Liebhold, A.M. & Marshall, D. (2006) Interceptions of nonindigenous plant pests at US ports of entry and border crossings over a 17-year period. *Biological Invasions*, **8**, 611–630.
- McCullough, D.G., Schneeberger, N.F. & Katovich, S.A. (2008) *Pest alert – emerald ash borer, revision III*. United States Department of Agriculture Forest Service, Northeastern Area State and Private Forestry Publication NA-PR-02-04, Newtown Square, PA. 2 p.

- McCullough, D.G., Poland, T.M., Anulewicz, A.C. & Cappaert, D. (2009a) Emerald ash borer (Coleoptera: Buprestidae) attraction to stressed or baited ash trees. *Environmental Entomology*, **38**, 1668–1679.
- McCullough, D.G., Poland, T.M. & Cappaert, D. (2009b) Attraction of the emerald ash borer to ash trees stressed by girdling, herbicide treatment, or wounding. *Canadian Journal of Forest Research*, **39**, 1331–1345.
- McCullough, D.G., Siegert, N.W., Poland, T.M., Pierce, S.J. & Ahn, S.Z. (2011) Effects of trap type, placement and ash distribution on emerald ash borer captures in a low density site. *Environmental Entomology*, **40**, 1239–1252.
- Mehta, S.V., Haight, R.A., Homans, F.R., Polasky, S. & Venette, R.C. (2007) Optimal detection and control strategies for invasive species management. *Ecological Economics*, **61**, 237–245.
- Memmott, J., Craze, P.G., Harman, H.M., Syrett, P. & Fowler, S.V. (2005) The effect of propagule size on the invasion of an alien insect. *Journal of Animal Ecology*, **74**, 50–62.
- Mercader, R.J., Siegert, N.W., Liebhold, A.M. & McCullough, D.G. (2009) Dispersal of the emerald ash borer, *Agrilus planipennis*, in newly-colonized sites. *Agricultural and Forest Entomology*, **11**, 421–424.
- Mercader, R.J., Siegert, N.W., Liebhold, A.M. & McCullough, D.G. (2011a) Influence of foraging behavior and host spatial distribution on the localized spread of the emerald ash borer, *Agrilus planipennis*. *Population Ecology*, **53**, 271–285.
- Mercader, R.J., Siegert, N.W., Liebhold, A.M. & McCullough, D.G. (2011b) Simulating the effectiveness of three potential management options to slow the spread of emerald ash borer (*Agrilus planipennis*) populations in localized outlier sites. *Canadian Journal of Forest Research*, **41**, 254–264.
- Mercader, R.J., Siegert, N.W. & McCullough, D.G. (2012) Estimating the influence of population density and dispersal behavior on the ability to detect and monitor *Agrilus planipennis* (Coleoptera: Buprestidae) populations. *Journal of Economic Entomology*, **105**, 272–281.
- Mercader, R.J., McCullough, D.G. & Bedford, J.M. (2013) A comparison of girdled ash detection trees and baited artificial traps for emerald ash borer (*Agrilus planipennis* Fairmaire) detection. *Environmental Entomology*, **42**, 1027–1039.
- Moody, M.E. & Mack, R.N. (1988) Controlling the spread of plant invasions: the importance of nascent foci. *Journal of Applied Ecology*, **25**, 1009–1021.
- Muirhead, J.R., Leung, B., van Overdijk, C., Kelly, D.W., Nandakumar, K., Marchant, K.R. & MacIsaac, H.J. (2006) Modelling local and long-distance dispersal of invasive emerald ash borer *Agrilus planipennis* (Coleoptera) in North America. *Diversity and Distributions*, **12**, 71–79.
- Niemelä, P. & Mattson, W.J. (1996) Invasion of North American forests by European phytophagous insects: legacy of the European crucible? *BioScience*, **46**, 741–753.
- Orlova-Bienkowskaja, M.J. (2013) Ashes in Europe are in danger: the invasive range of *Agrilus planipennis* in European Russia is expanding. *Biological Invasions*, published online 29 October 2013.
- Orvis, K.H. & Grissino-Mayer, H.D. (2002) Standardizing the reporting of abrasive papers used to surface tree-ring samples. *Tree-Ring Research*, **58**, 47–50.
- Phipps, R.L. (1985) Collecting, preparing, crossdating, and measuring tree increment cores. United States Geological Survey Water-Resources Investigations Report 85-4148, Washington, D.C.
- Poland, T.M. & McCullough, D.G. (2006) Emerald ash borer: invasion of the urban forest and the threat to North America's ash resource. *Journal of Forestry*, **104**, 118–124.
- Poland, T.M., McCullough, D.G. & Anulewicz, A.C. (2011) Evaluation of double-decker traps for emerald ash borer (Coleoptera: Buprestidae). *Journal of Economic Entomology*, **104**, 517–531.
- Prasad, A.M., Iverson, L.R., Peters, M.P., Bossenbroek, J.M., Matthews, S.N., Sydnor, T.D. & Schwartz, M.W. (2010) Modeling the invasive emerald ash borer risk of spread using a spatially explicit cellular model. *Landscape Ecology*, **25**, 353–369.
- Rauscher, K.J. (2005) Emerald ash borer. Michigan Department of Agriculture, Pesticide and Plant Pest Management Division, Annual Report, 2004, pp. 26–31.
- Rauscher, K.J. & Mastro, V. (2004) The Michigan emerald ash borer program. *Emerald ash borer research and technology development meeting, September 30–October 1, 2003* (ed. by V. Mastro and R. Reardon), pp. 1–2. United States Department of Agriculture Forest Service, Forest Health Technology Enterprise Team Publication FHTET-2004-02, Morgantown, WV. 44 p.
- Rebek, E.J., Herms, D.A. & Smitley, D.R. (2008) Interspecific variation in resistance to emerald ash borer (Coleoptera: Buprestidae) among North American and Asian ash (*Fraxinus* spp.). *Environmental Entomology*, **37**, 242–246.
- Rentch, J., Faivan, M.A., Evans, R.A. & Onken, B. (2009) Using dendrochronology to model hemlock woolly adelgid effects on eastern hemlock growth and vulnerability. *Biological Invasions*, **11**, 551–563.
- Rodriguez-Saona, C., Poland, T.M., Miller, J.R., Stelinski, L.L., Grant, G.G., de Groot, P., Buchan, L. & MacDonald, L. (2006) Behavioral and electrophysiological responses of the emerald ash borer, *Agrilus planipennis*, to induced volatiles of Manchurian ash, *Fraxinus mandshurica*. *Chemoecology*, **16**, 75–86.
- Ryerson, D.E., Swetnam, T.W. & Lynch, A.M. (2003) A tree-ring reconstruction of western spruce budworm outbreaks in the San Juan Mountains, Colorado, U.S.A. *Canadian Journal of Forest Research*, **33**, 1010–1028.
- Sakai, A.K., Allendorf, F.W., Holt, J.S., Lodge, D.M., Molofsky, J., With, K.A., Baughman, S., Cabin, R.J., Cohen, J.E., Ellstrand, N.C., McCauley, D.E., O'Neil, P., Parker, I.M., Thompson, J.N. & Weller, S.G. (2001) The population biology of invasive species. *Annual Review of Ecology, Evolution, and Systematics*, **32**, 305–332.
- Shigesada, N. & Kawasaki, K. (1997) *Biological invasions: theory and practice*. Oxford University Press, New York.

- Siegert, N.W., McCullough, D.G., Liebhold, A.M. & Telewski, F.W. (2007) Resurrected from the ashes: a historical reconstruction of emerald ash borer dynamics through dendrochronological analysis. *Emerald ash borer and Asian longhorned beetle research and technology development meeting, October 29–November 2, 2006* (ed. by V. Mastro, D. Lance, R. Reardon and G. Parra), pp. 18–19. United States Department of Agriculture Forest Service, Forest Health Technology Enterprise Team Publication FHTET-2007-04, Morgantown, WV. 141 p.
- Siegert, N.W., McCullough, D.G., Williams, D.W., Fraser, I., Poland, T.M. & Pierce, S.J. (2010) Dispersal of *Agrilus planipennis* (Coleoptera: Buprestidae) from discrete epicenters in two outlier sites. *Environmental Entomology*, **39**, 253–265.
- Skellam, J.G. (1951) Random dispersal in theoretical populations. *Biometrika*, **38**, 196–218.
- Solomon, J.D. (1995) *Guide to insect borers of North American broadleaf trees and shrubs*. United States Department of Agriculture Forest Service, Agricultural Handbook 706, Washington, D.C.
- Stokes, M.A. & Smiley, T.L. (1968) *An introduction to tree-ring dating*. University of Chicago Press, Chicago.
- Storer, A.J., Metzger, J.A., Heyd, R.L., Katovich, S.A. & Hyslop, M.D. (2007) Three years of a risk-based emerald ash borer detection survey and firewood survey in Michigan and Wisconsin. *Emerald ash borer and Asian longhorned beetle research and technology development meeting, October 29–November 2, 2006* (ed. by V. Mastro, D. Lance, R. Reardon and G. Parra), pp. 70–71. United States Department of Agriculture Forest Service, Forest Health Technology Enterprise Team Publication FHTET-2007-04, Morgantown, WV. 141 p.
- Swetnam, T.W. & Lynch, A.M. (1993) Multicentury, regional-scale patterns of western spruce budworm outbreaks. *Ecological Monographs*, **63**, 399–424.
- Swetnam, T.W., Allen, C.D. & Betancourt, J.L. (1999) Applied historical ecology: using the past to manage for the future. *Ecological Applications*, **9**, 1189–1206.
- Tanis, S.R. & McCullough, D.G. (2012) Differential persistence of blue ash and white ash following emerald ash borer invasion. *Canadian Journal of Forest Research*, **42**, 1542–1550.
- Tatem, A.J. & Hay, S.I. (2007) Climatic similarity and biological exchange in the worldwide airline transportation network. *Proceedings of the Royal Society B*, **274**, 1489–1496.
- Taylor, C.M. & Hastings, A. (2005) Allee effects in biological invasions. *Ecology Letters*, **8**, 895–908.
- Taylor, R.A.J., Bauer, L.S., Poland, T.M. & Windell, K.N. (2010) Flight performance of *Agrilus planipennis* (Coleoptera: Buprestidae) on a flight mill and in free flight. *Journal of Insect Behavior*, **23**, 128–148.
- Tluczek, A.R., McCullough, D.G. & Poland, T.M. (2011) Influence of host stress on emerald ash borer (*Agrilus planipennis* Fairmaire) (Coleoptera: Buprestidae) adult density, development, and distribution in *Fraxinus pennsylvanica* trees. *Environmental Entomology*, **40**, 357–366.
- Tobin, P.C., Kean, J.M., Suckling, D.M., McCullough, D.G., Herms, D.A. & Stringer, L.D. (2014) Determinants of successful arthropod eradication programs. *Biological Invasions*, **16**, 401–414.
- United States Department of Agriculture Animal & Plant Health Inspection Service (USDA APHIS) (2003) *Importation of solid wood packing material, final environmental impact statement – August 2003*. United States Department of Agriculture Animal & Plant Health Inspection Service, Plant Protection and Quarantine, Riverdale.
- United States Department of Agriculture Animal & Plant Health Inspection Service (USDA APHIS) (2010) *Risk assessment of the movement of firewood within the United States*. United States Department of Agriculture Animal & Plant Health Inspection Service, Plant Protection and Quarantine, Raleigh.
- Wangen, S.R. & Webster, C.R. (2006) Potential for multiple lag phases during biotic invasions: reconstructing an invasion of the exotic tree *Acer platanoides*. *Journal of Applied Ecology*, **43**, 258–268.
- Watson, D.F. & Philip, G.M. (1985) A refinement of inverse distance weighted interpolation. *Geo-Processing*, **2**, 315–327.
- Williams, P.A., Kean, J.M. & Buxton, R.P. (2010) Multiple factors determine the rate of increase of an invading non-native tree in New Zealand. *Biological Invasions*, **12**, 1377–1388.
- Work, T.T., McCullough, D.G., Cavey, J.F. & Komsa, R. (2005) Arrival rate of nonindigenous insect species into the United States through foreign trade. *Biological Invasions*, **7**, 323–332.

## BIOSKETCH

**Nathan W. Siegert** is a forest entomologist, whose work focuses on the behaviour and ecology of native and non-native forest insects to help maintain healthy productive forests and better manage forest ecosystems. He is broadly interested in the ecological and evolutionary aspects of plant–insect interactions, population dynamics of forest insects and invasive species biology.

Author contributions: The initial concept for this work was developed by D.G.M. and N.W.S. N.W.S. oversaw data collection and analyses; N.W.S., D.G.M. and A.M.L. contributed expertise on emerald ash borer and invasion ecology; F.W.T. and N.W.S. contributed dendrochronology expertise. All authors contributed to the writing, which was led by N.W.S. and D.G.M.

---

Editor: Hugh MacIsaac